**DETTAGLI**

- Elastico e coulisse in vita
- 2 tasche davanti
- 2 tasche sul retro

**TAGLIE**

XS ÷ 3XL  
Slim Fit

**COLORE**

U32 Nero

**TESSUTO**

65% poliestere  
35% cotone  
200 g / m<sup>2</sup>



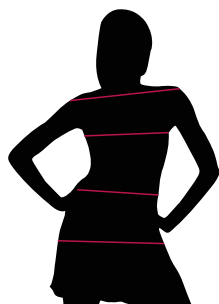
Le misure indicate si riferiscono alle taglie **S** per i capi femminili, **L** per i capi maschili. Per i capi a taglia unica le misure indicate sono effettive.

Il pantalone Cameron, dalla vestibilità Slim Fit, presenta due ampie tasche laterali e due tasche nel retro dal taglio obliquo. Un elastico ed una coulisse in tinta cingono la vita, resistente ai lavaggi alle alte temperature.

**COLORI DISPONIBILI**

U32 Nero

TABELLE TAGLIE  
E CORRISPONDENZE



1  
2  
3  
4

TABELLA ST-P4 SLIM FIT

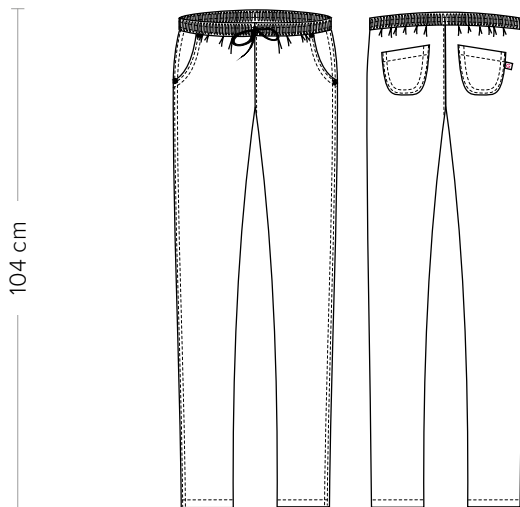
TAGLIA	XS	S	M	L	XL	XXL	3XL	4XL
1 - SPALLE								
2 - CIRCONFERENZA TORACE								
3 - CIRCONFERENZA VITA	69-76	76-80	80-84	84-88	88-94	94-100	100-106	106-112
4 - CIRCONFERENZA BACINO	86-92	92-96	96-100	100-104	104-110	110-116	116-122	122-128

**GUIDA ALLE TAGLIE** **1)** Prendere le misure anatomiche (corpo con abbigliamento intimo) senza stringere mantenendo ben teso il metro. Nota: nel caso vogliate indossare dei camici già con dell'abbigliamento sotto prendete le misure già abbigliati. **2)** Nel caso tra le misure prese vi fosse una misura a cavallo fra 2 taglie vi consigliamo di prendere quella più grande. **3)** Le misure della tabella sono espresse in centimetri.

# CAMERON

ITEM CODE  
Q2P00241

**Giblor's**  
italian work/life specialist



## DETAILS

- Elasticated waistband with drawstring
- 2 front pockets
- 2 rear pockets

## COLOURS

U32 Black

## FABRIC

65% polyester  
35% cotton  
200 g / m<sup>2</sup>



## SIZES

XS ÷ 3XL  
Slim Fit

The measures indicated refer to sizes **S** for women, **L** for men. For one-size-fits-all garments, the measurements indicated are effective.

The Cameron trousers, with a Slim Fit, have two large side pockets and two back pockets with an oblique cut. An elastic and a drawstring in the same colour surround the waist, finished with a lace with plasticized and break-resistant props.

## AVAILABLE COLOURS



U32 Black

## SIZE TABLES AND CORRESPONDENCES

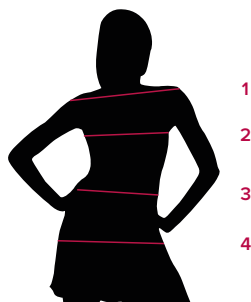


TABLE ST-P4 SLIM FIT								
SIZE	XS	S	M	L	XL	XXL	3XL	4XL
1 - SHOULDERS								
2 - CHEST CIRCUMFERENCE								
3 - WAIST CIRCUMFERENCE	69-76	76-80	80-84	84-88	88-94	94-100	100-106	106-112
4 - HIPS CIRCUMFERENCE	86-92	92-96	96-100	100-104	104-110	110-116	116-122	122-128

**SIZE GUIDE** **1)** Take the anatomical measurements (body with underwear) without tightening, keeping the measuring tape taut. Note: in case you want to wear of the gowns already with the clothing underneath take the measurements already dressed. **2)** If there is a measure between 2 sizes between the measurements taken, we advise you to take the bigger one. **3)** The measurements in the table are expressed in centimeters.

**GIBLORS.COM**