

DETTAGLI

- Elastico e coulisse in vita
- Chiusura zip
- 2 tasche davanti
- 1 tasca sul retro

COLORE

R119 Rigato grigio
R000 Rigato nero

TESSUTO

70% cotone
30% poliestere
145 g / m²

TAGLIE

XS ÷ 5XL
Regular Fit



Le misure indicate si riferiscono alle taglie **S** per i capi femminili, **L** per i capi maschili. Per i capi a taglia unica le misure indicate sono effettive.

Pantalone dalla vestibilità regular e taglio trendy, realizzato in elegante tessuto gessato 70% cotone 30% poliestere, dalla mano morbida. Proposto in due varianti: fondo nero con riga grigia e fondo grigio con riga nera. Fascione con coulisse, due tasche sui fianchi e piccola tasca posteriore.

COLORI DISPONIBILI



R119 Rigato grigio



R000 Rigato nero

TABELLE TAGLIE
E CORRESPONDENZE

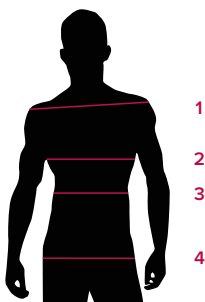
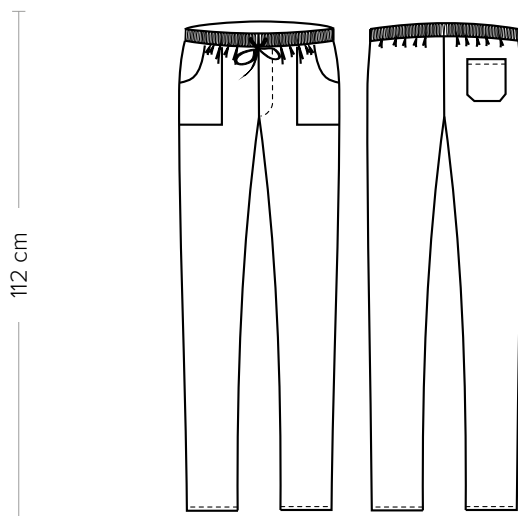


TABELLA ST-P3	REGULAR FIT											
TAGLIA	XXS	XS	S	M	L	XL	XXL	3XL	4XL	5XL	6XL	7XL
1 - SPALLE												
2 - TORACE												
3 - VITA	78-86	86-90	90-94	94-98	98-102	102-108	108-114	114-120	120-126	126-132	132-138	138-144
4 - BACINO	86-90	90-94	94-98	98-103	103-107	107-113	113-119	119-126	126-132	132-138	138-144	144-151

GUIDA ALLE TAGLIE **1)** Prendere le misure anatomiche (corpo con abbigliamento intimo) senza stringere mantenendo ben teso il metro. Nota: nel caso vogliate indossare dei camici già con dell'abbigliamento sotto prendete le misure già abbigliati. **2)** Nel caso tra le misure prese vi fosse una misura a cavallo fra 2 taglie vi consigliamo di prendere quella più grande. **3)** Le misure della tabella sono espresse in centimetri.



DETAILS

- Elasticated waistband with drawstring
- Zip fly
- 2 front pockets
- 1 rear pocket

COLOURS

R119 Grey striped
R000 Black striped

FABRIC

70% cotton
30% polyester
145 g / m²

SIZES

XS ÷ 5XL
Regular Fit



The measures indicated refer to sizes **S** for women, **L** for men. For one-size-fits-all garments, the measurements indicated are effective.

Trousers with a regular fit and trendy cut, made of elegant 70% cotton 30% polyester pinstripe fabric with a soft hand. Proposed in two variants: black background with gray line and gray background with black line. Band with drawstring, two pockets on the hips and a small back pocket.

AVAILABLE COLOURS



R119 Grey striped



R000 Black striped

SIZE TABLES AND CORRESPONDENCES

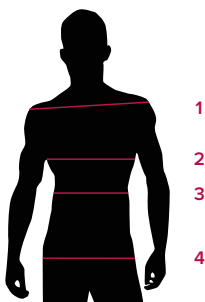


TABELLA ST-P3	REGULAR FIT											
TAGLIA	XXS	XS	S	M	L	XL	XXL	3XL	4XL	5XL	6XL	7XL
1 - SPALLE												
2 - TORACE												
3 - VITA	78-86	86-90	90-94	94-98	98-102	102-108	108-114	114-120	120-126	126-132	132-138	138-144
4 - BACINO	86-90	90-94	94-98	98-103	103-107	107-113	113-119	119-126	126-132	132-138	138-144	144-151

SIZE GUIDE **1)** Take the anatomical measurements (body with underwear) without tightening, keeping the measuring tape taut. Note: in case you want to wear of the gowns already with the clothing underneath take the measurements already dressed. **2)** If there is a measure between 2 sizes between the measurements taken, we advise you to take the bigger one. **3)** The measurements in the table are expressed in centimeters.