

DETTAGLI

- Manica lunga elastico al polso
- 3 tasche

COLORE

426 Verde
595 Blu

TESSUTO

65% poliestere
35% cotone
140 g / m²

TAGLIE

XS ÷ XXXL
Regular Fit



Le misure indicate si riferiscono alle taglie **S** per i capi femminili, **L** per i capi maschili. Per i capi a taglia unica le misure indicate sono effettive.

COLORI DISPONIBILI

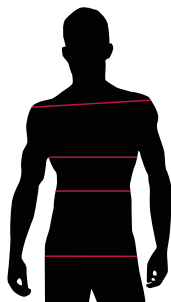


426 Verde



595 Blu

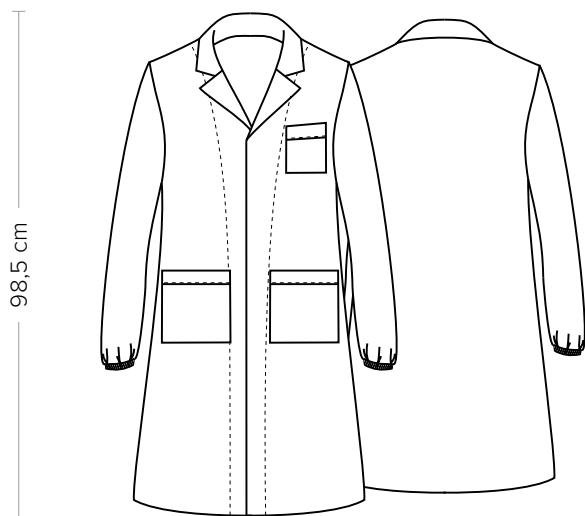
TABELLE TAGLIE
E CORRISPONDENZE



1
2
3
4

TABELLA ST-R6 REGULAR FIT							
TAGLIA	XS	S	M	L	XL	XXL	XXXL
1 - SPALLE							
2 - CIRCONFERENZA TORACE	90-108	108-112	113-116	117-122	123-128	129-136	137-144
3 - CIRCONFERENZA VITA	90-108	108-112	113-116	117-122	123-128	129-136	137-144
4 - CIRCONFERENZA BACINO	90-108	108-112	113-116	117-122	123-128	129-136	137-144

GUIDA ALLE TAGLIE **1)** Prendere le misure anatomiche (corpo con abbigliamento intimo) senza stringere mantenendo ben teso il metro. Nota: nel caso vogliate indossare dei camici già con dell'abbigliamento sotto prendete le misure già abbigliati. **2)** Nel caso tra le misure prese vi fosse una misura a cavallo fra 2 taglie vi consigliamo di prendere quella più grande. **3)** Le misure della tabella sono espresse in centimetri.



DETAILS

- Cuff with elastic band
- 3 pockets

SIZES

XS ÷ XXXL
Regular Fit

COLOURS

426 Green
595 Blue

FABRIC

65% polyester
35% cotton
140 g / m²



The measures indicated refer to sizes **S** for women, **L** for men. For one-size-fits-all garments, the measurements indicated are effective.

AVAILABLE COLOURS

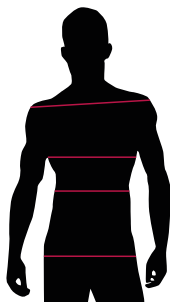


426 Green



595 Blue

SIZE TABLES AND CORRESPONDENCES



1
2
3
4

TABLE ST-R6 REGULAR FIT							
SIZE	XS	S	M	L	XL	XXL	XXXL
1 - SHOULDERS							
2 - CHEST CIRCUMFERENCE	90-108	108-112	113-116	117-122	123-128	129-136	137-144
3 - WAIST CIRCUMFERENCE	90-108	108-112	113-116	117-122	123-128	129-136	137-144
4 - HIPS CIRCUMFERENCE	90-108	108-112	113-116	117-122	123-128	129-136	137-144

SIZE GUIDE **1)** Take the anatomical measurements (body with underwear) without tightening, keeping the measuring tape taut. Note: in case you want to wear of the gowns already with the clothing underneath take the measurements already dressed. **2)** If there is a measure between 2 sizes between the measurements taken, we advise you to take the bigger one. **3)** The measurements in the table are expressed in centimeters.