**DETTAGLI**

- Abbottonatura nascosta con automatici
- 2 tasche

TAGLIE

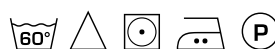
XS ÷ 4XL
Slim Fit

COLORE

00 Bianco
000 Nero

TESSUTO

65% poliestere
35% cotone
140 g / m²



Le misure indicate si riferiscono alle taglie **S** per i capi femminili, **L** per i capi maschili. Per i capi a taglia unica le misure indicate sono effettive.

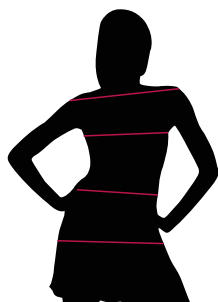
Casacca estremamente femminile, con collo mezzo coreano arrotondato e profilo a contrasto, caratterizzata dalle due tasche nascoste a sacco. L'abbottonatura nascosta ed asimmetrica le dona un look professionale e trendy al tempo stesso.

COLORI DISPONIBILI

00 Bianco

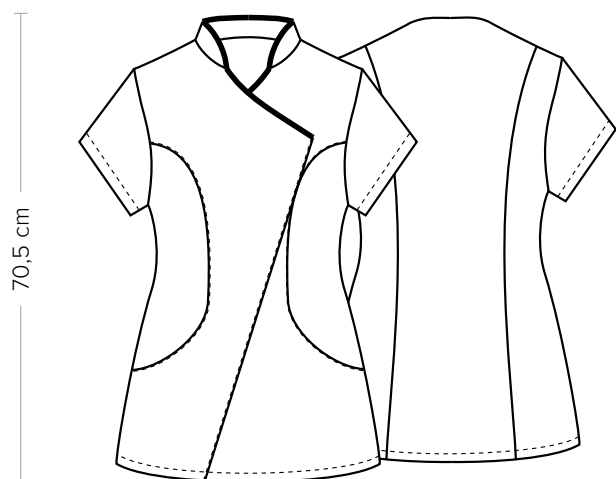


000 Nero

TABELLE TAGLIE
E CORRESPONDENZE**TABELLA ST-K1 SLIM FIT**

TAGLIA	XS	S	M	L	XL	XXL	3XL	4XL	5XL
1 - SPALLE									
2 - TORACE circonferenza	82-88	88-92	92-96	96-102	102-108	108-116	116-124	124-134	134-144
3 - VITA circonferenza	71-75	75-79	79-83	83-90	90-97	97-107	107-116	116-128	128-138
4 - BACINO circonferenza	92-96	96-100	100-104	104-111	111-117	117-125	125-134	134-143	143-153

GUIDA ALLE TAGLIE **1)** Prendere le misure anatomiche (corpo con abbigliamento intimo) senza stringere mantenendo ben teso il metro. Nota: nel caso vogliate indossare dei camici già con dell'abbigliamento sotto prendete le misure già abbigliati. **2)** Nel caso tra le misure prese vi fosse una misura a cavallo fra 2 taglie vi consigliamo di prendere quella più grande. **3)** Le misure della tabella sono espresse in centimetri.

**DETAILS**

- Concealed buttoning with press studs
- 2 pockets

SIZES

XS ÷ 4XL
Slim Fit

COLOURS

00 White
000 Black

FABRIC

65% polyester
35% cotton
140 g / m²



The measures indicated refer to sizes **S** for women, **L** for men. For one-size-fits-all garments, the measurements indicated are effective.

Extremely feminine tunic, with round half mandarin collar and contrast piping, characterised by two hidden pockets. The concealed asymmetric buttoning gives it a professional and trendy look at the same time.

AVAILABLE COLOURS

00 White



000 Black

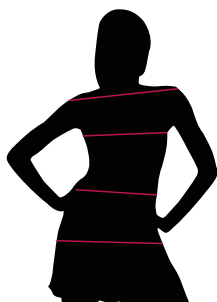
SIZE TABLES
AND CORRESPONDENCES

TABLE ST-K1 SLIM FIT

SIZE	XS	S	M	L	XL	XXL	3XL	4XL	5XL
1 - SHOULDERS									
2 - CHEST circumference	82-88	88-92	92-96	96-102	102-108	108-116	116-124	124-134	134-144
3 - WAIST circumference	71-75	75-79	79-83	83-90	90-97	97-107	107-116	116-128	128-138
4 - HIPS circumference	92-96	96-100	100-104	104-111	111-117	117-125	125-134	134-143	143-153

SIZE GUIDE **1)** Take the anatomical measurements (body with underwear) without tightening, keeping the measuring tape taut. Note: in case you want to wear of the gowns already with the clothing underneath take the measurements already dressed. **2)** If there is a measure between 2 sizes between the measurements taken, we advise you to take the bigger one. **3)** The measurements in the table are expressed in centimeters.