

DETTAGLI

- Foderato
- 2 tasche
- 4 bottoni 4 fori
- Fascette regolabili

COLORE

000 Nero

TESSUTO

100% poliestere
160 g / m²

TAGLIE

XS ÷ 4XL
Regular Fit



Le misure indicate si riferiscono alle taglie **S** per i capi femminili, **L** per i capi maschili. Per i capi a taglia unica le misure indicate sono effettive.

Il Gilet Miguel, dallo stile classico e taglio Slim Fit, è perfetto per ambienti come reception e sala. Realizzato in poliestere di media grammatura e valorizzato dalla tecnologia indantrene, offre una resistenza eccellente ai lavaggi ad alte temperature. Il design monopetto con scollo a V, 4 bottoni in tinta e due tasche funzionali unisce praticità ed eleganza. Disponibile in nero, blu e bordeaux.

COLORI DISPONIBILI



000 Nero

TABELLE TAGLIE E CORRESPONDENZE

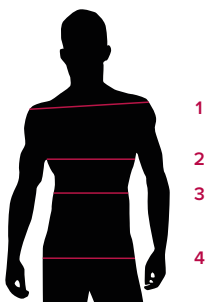
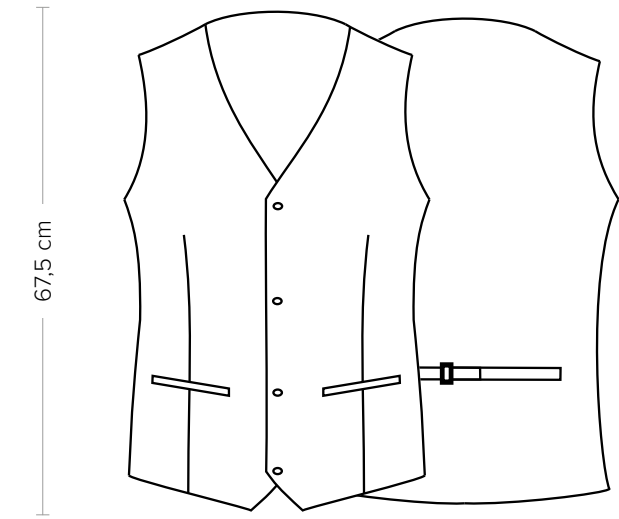


TABELLA ST-E3 SLIM FIT									
TAGLIA	XS	S	M	L	XL	XXL	3XL	4XL	5XL
1 - SPALLE									
2 - TORACE circonferenza	85-91	91-95	95-99	99-105	105-111	111-119	119-127	127-137	137-147
3 - VITA circonferenza	82-87	87-91	91-95	95-101	101-107	107-115	115-123	123-133	133-143
4 - BACINO circonferenza	82-88	88-92	92-96	96-102	102-108	108-116	116-124	124-134	134-144

GUIDA ALLE TAGLIE **1)** Prendere le misure anatomiche (corpo con abbigliamento intimo) senza stringere mantenendo ben teso il metro. **Nota:** nel caso vogliate indossare dei camici già con dell'abbigliamento sotto prendete le misure già abbigliati. **2)** Nel caso tra le misure prese vi fosse una misura a cavallo fra 2 taglie vi consigliamo di prendere quella più grande. **3)** Le misure della tabella sono espresse in centimetri.



DETAILS

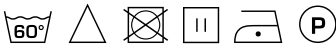
- Lined
- 2 pockets
- 4 buttons with four-holes
- Adjustable buckle

COLOURS

000 Black

FABRIC

100% polyester
160 g / m²



SIZES

XS ÷ 4XL
Regular Fit

The measures indicated refer to sizes **S** for women, **L** for men. For one-size-fits-all garments, the measurements indicated are effective.

The Miguel Vest combines classic style with a Slim Fit cut, making it ideal for reception and dining areas. Crafted from medium-weight polyester and enhanced with indantrene technology, it withstands high-temperature washes with ease. Its single-breasted design features a V-neck, 4 matching buttons, and two functional pockets, blending practicality with elegance. Available in black, blue, and burgundy.

AVAILABLE COLOURS



000 Black

SIZE TABLES
AND CORRESPONDENCES

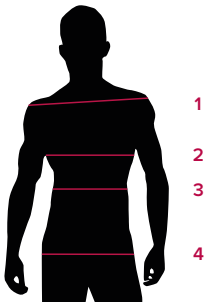


TABLE ST-E3 SLIM FIT									
SIZE	XS	S	M	L	XL	XXL	3XL	4XL	5XL
1 - SHOULDERS									
2 - CHEST circumference	85-91	91-95	95-99	99-105	105-111	111-119	119-127	127-137	137-147
3 - WAIST circumference	82-87	87-91	91-95	95-101	101-107	107-115	115-123	123-133	133-143
4 - HIPS circumference	82-88	88-92	92-96	96-102	102-108	108-116	116-124	124-134	134-144

SIZE GUIDE **1)** Take the anatomical measurements (body with underwear) without tightening, keeping the measuring tape taut. Note: in case you want to wear of the gowns already with the clothing underneath take the measurements already dressed. **2)** If there is a measure between 2 sizes between the measurements taken, we advise you to take the bigger one. **3)** The measurements in the table are expressed in centimeters.